

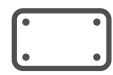
# AWMS-2-4640

15.7" Post With Two 18" Monitor Arms

The **AWMS-2-4640** is a dual 18" arm combination attached to a 15.7" post. The two arms can be installed in a dual row side-by-side or back-to-back configuration.



## Set & Forget desk mounting solutions



75 x 75  
100 x 100



26.5lb  
per monitor

### Tool-free

viewing angle adjustment.  
Landscape to portrait rotation

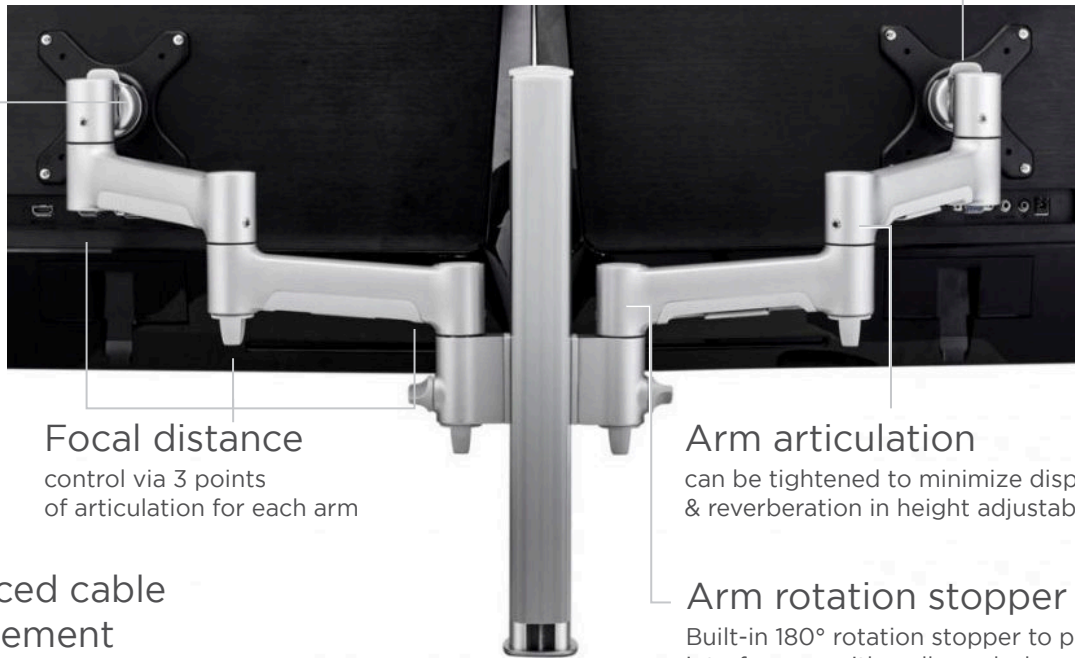
### Ideal for

monitors up to 30" or 34" with  
the monitor slider accessory  
(see reverse page for details)

### Quick

### display release

mechanism for easy installation



### Focal distance

control via 3 points  
of articulation for each arm

### Arm articulation

can be tightened to minimize display motion  
& reverberation in height adjustable desks

### Advanced cable management

Available in silver, black or white



### Arm rotation stopper

Built-in 180° rotation stopper to prevent  
interference with walls or desk partitions

### Material

100% recyclable, lightweight  
yet durable aluminum

**10 year warranty**

## Modular mounting solutions



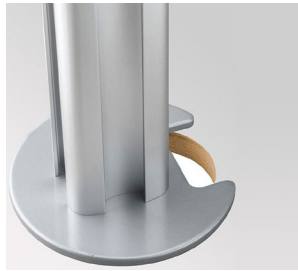
### Desk fixing options (sold separately)

#### Bolt through AWM-FB



Offers flexible mounting position. Used when attachment to the edge of the desk is not possible. Suitable for desks up to 1.3".

#### Grommet clamp AC-GC



Utilises an existing grommet hole or can be used as bolt through fixing. The plate provides extra stability for heavy loads. Fits grommet holes 2.36" - 3.15" in diameter.

#### F-clamp AWM-FF



Traditional two-piece design that is used for retrofit and thicker desk surfaces up to 3.1".

#### C-clamp AWM-FC



Suited to desks with potential to interfere with the elements under the desk such as cable cages. Suitable for desks up to 1.3".

### Accessories

Display mounting heads can be replaced with the notebook holder or tablet holder (sold separately). The AWM-HS slider accessory provides an additional range of horizontal display adjustment in multi-screen configurations to accommodate larger/wider monitors. Mini PCs can be attached to the post using the AC-MP plate.

#### Notebook holder AWM-HN



#### Slider accessory AWM-HS



#### Mini PC mounting plate AC-MP



#### Universal tablet holder AC-AP-UTH



### Ordering AWMS-2-4640 and accessories

#### AWMS-2-4640 consists of the following parts:

- 1 x AWM-P40 15.7" post
- 2 x AWM-LC post channel clamps
- 2 x AWM-A46 monitor arms

#### Desk fixing options:

- AWM-FB bolt through
- AWM-FF F-clamp
- AWM-FC C-clamp
- AC-GC grommet clamp

#### Accessories:

- AWM-HS monitor slider accessory
- SNTB notebook holder
- AC-MP mini PC mounting plate
- AC-AP-UTH universal tablet holder

For all AWM components, add -S for silver, -B - for black and -W for white at the end of the main code.



Atdec Uncover™ is where our infinite mounting possibilities become your specific mounting solutions.



Call us on 888 303 4252 to discuss your next project or visit [atdec.com/workspace](http://atdec.com/workspace)