

AWMS-2-BT75

HEAVY-DUTY DUAL VERTICAL MONITOR MOUNT

For vertical mount of dual large heavy monitors, including the most deeply curved ultrawide displays. Tool-free height & tilt adjustment of each monitor, smart features for seamless bevel alignment. The assurance of ergonomic excellence plus high product performance with Atdec.

Ergonomic & Secure for ultrawide monitors



24" to 55"



75x75
100x100



25kg (55lb)
FLAT
18kg (26.5lb)
CURVED

Perfect placement

Tool-free micro-adjustments to fine-tune monitor alignment;

- Height $\pm 6\text{mm}$ ($\pm 1/4"$)
- Levelling $\pm 3^\circ$
per monitor

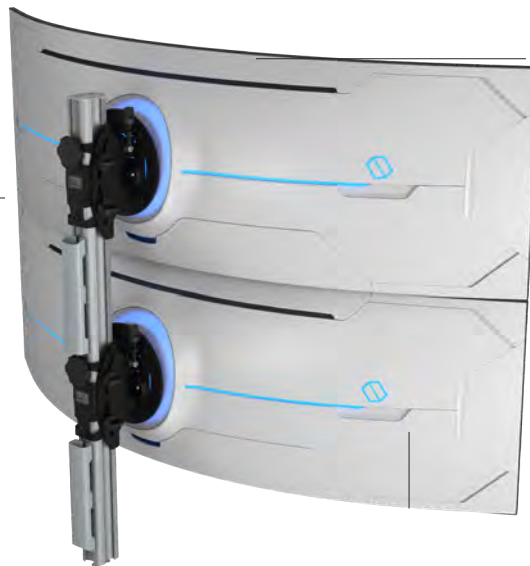


Super heavy-duty buckets

Quick Connect for displays
Tilts -8° to $+12^\circ$

Futureproof

Upgrade as desired with the modular AWM family of products



Capacity

High capacity including for curved displays

Height & tilt

Set bracket height & tilt without tools

Quality construction

Easy assembly & disassembly plus high quality recyclable material construction

Posts in silver or black



Cable management

Discrete through the post

Sturdy desk fixing

with choice of clamp or grommet/bolt-through styles

10 Year Warranty

Ergonomic & Secure for ultrawide monitors



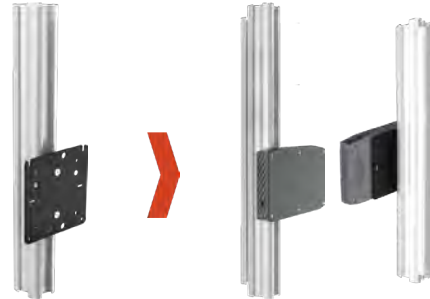
Flexibility & upgradability

For your monitor upgrades

We design our mounts to be robust and upgradable, in the expectation that display model and/or configuration update is likely during the mount's service life. This solution has been rigorously tested for stability with a wide variety of monitor specifications.

Ingenious accessories

Reclaim more of your desk space and secure your mini PC by fixing it to your monitor mount post with AC-MP mini PC mounting plate.



Ordering guide

AWMS-2-BT75 consists of:

2 x AWM-BT tilt brackets

1 x AWM-P75G post

Desk fixing options:

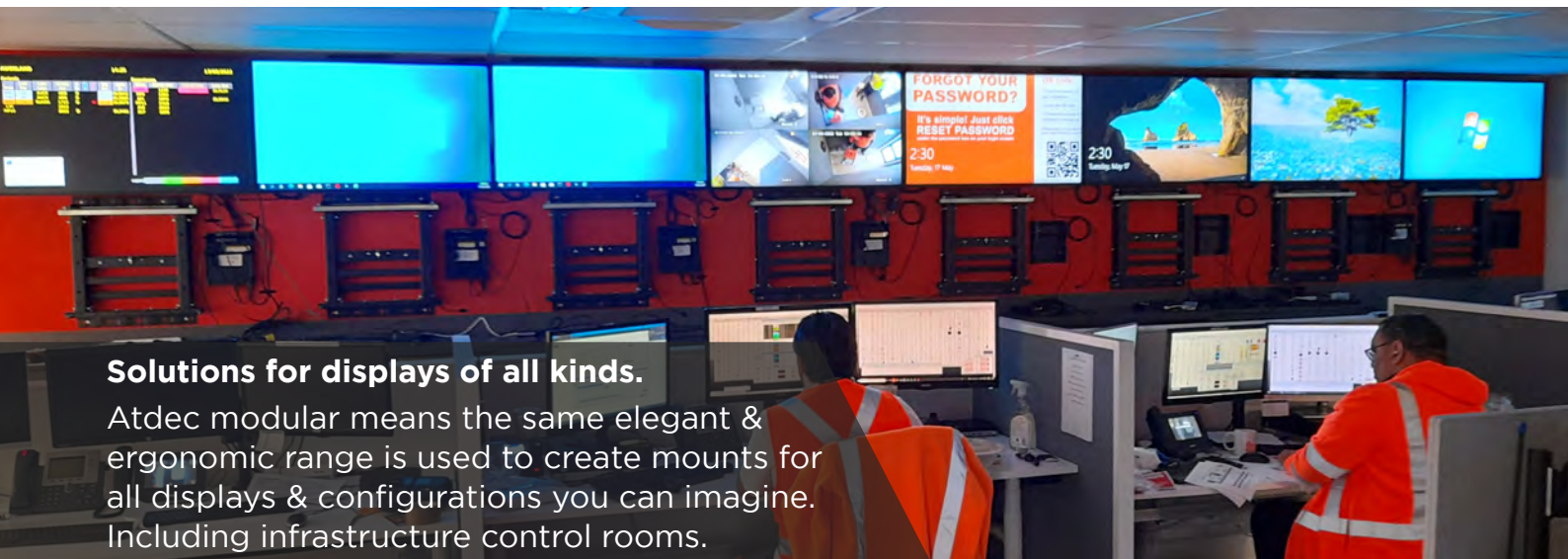
AWM-FH heavy-duty F-clamp

AC-GC grommet/bolt-through

Accessory:

AC-MP mini PC mounting plate

AWM components are typically available in black, white, and silver. Nominate your selection with the addition of -B (black), -W (white), or -S (silver) at the end of the main code.



Solutions for displays of all kinds.

Atdec modular means the same elegant & ergonomic range is used to create mounts for all displays & configurations you can imagine. Including infrastructure control rooms.



Atdec Uncover™ is where our infinite mounting possibilities become your specific mounting solutions.



Call us to discuss your next project

ATDEC Infinite Mounting Possibilities

Australia
+61 2 8729 5000
support@atdec.com
www.atdec.com.au

North America
888 303 4252
usasales@atdec.com
www.atdec.com

UK (EMEA)
+44 3330 117725
sales@atdec.co.uk
www.atdec.co.uk

New Zealand
0800 887 298
nz@atdec.com
www.atdec.co.nz