

Single Display Wall Mounts

AD-WF-5040 AD-WT-5040 AD-WFP-5040

This versatile range answers virtually all single display wall mount needs for devices up to 50kg (110lbs).

Landscape or portrait orientation, straight angle or tilted, low profile to wall or more space to discretely stow devices - this range suits commercial, light industrial, and domestic environments.



Robust & Reliable wall mounting solutions



Installer friendly

Integrated spirit level and slotted holes on all versions

Wall offset options

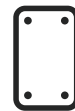
Low profile AD-WF-5040 sits snug to the wall, or select AD-WT-5040 with 56mm (2.2") space for concealing devices

Suits most needs

Robust & agile for single displays weighing to 50kg (110lbs)



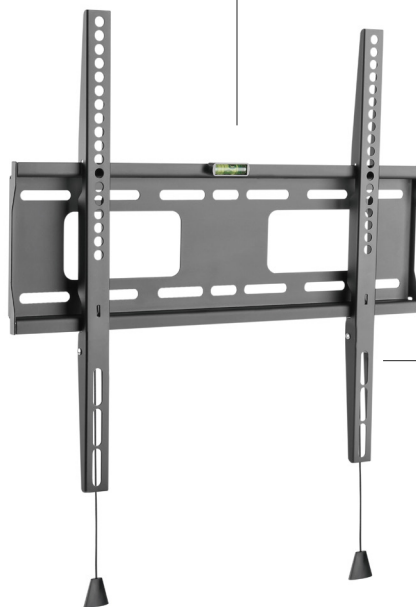
100 x 100
400 x 400



100 x 100
400 x 600



50kg
(110lbs)



Theft resistant

AD-WFP-5040 offers lockable display for device security

Tilt display version

Set tilt -10° to 5° on AD-WT-5040



Display release cords

All versions offer magnetic tags for easy safe concealment

Available in black



10 Year Warranty

Robust & Reliable wall mounting solutions



Wall mounting options

Fixed Mount
AD-WF-5040



Low-profile mounting parallel to the wall. Simple, robust, and functional.

Tilt Mount
AD-WT-5040



Tilted display mounting with range -10° to 5°. More space behind display for technology.

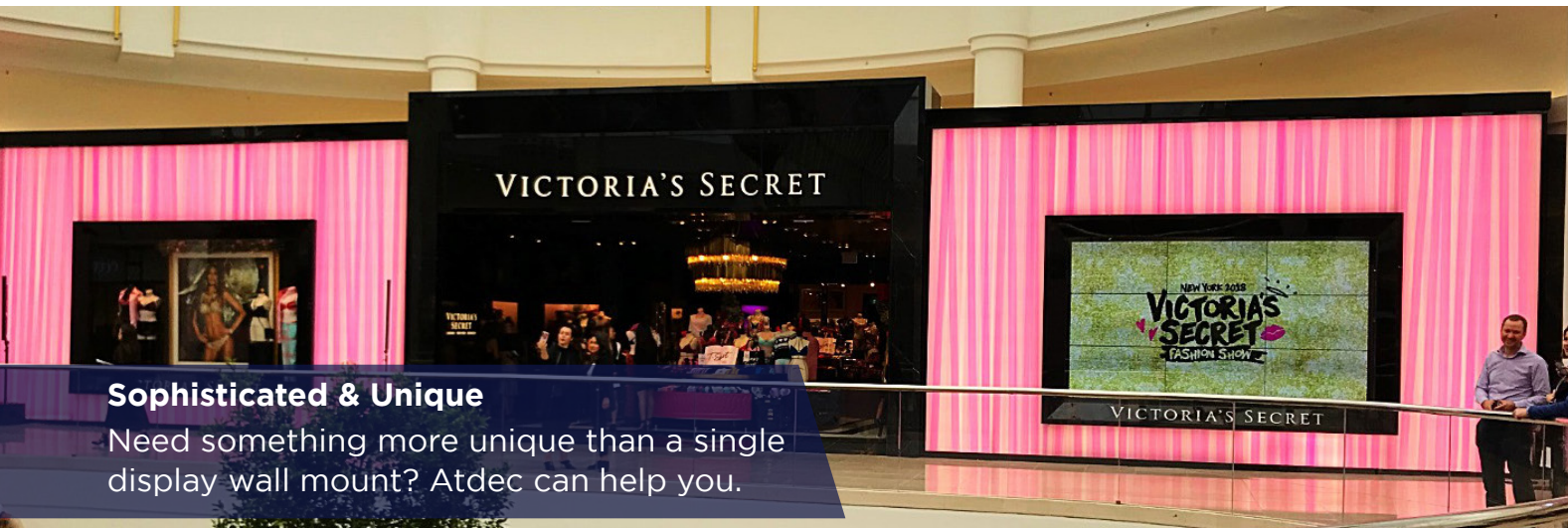
Portrait Mount
AD-WFP-5040



Portrait mounting for displays with less common VESA patterns. Theft resistant design.

Ordering standard single display wall mounts

Atdec Code	Name	Description
AD-WF-5040	Fixed Mount	Low 25mm (1") profile. VESA 100-400. Simple, robust, functional. Black.
AD-WT-5040	Tilt Mount	Tilt range -10° to +5°. VESA 100-400. Wide 56mm (2.20") wall offset. Black.
AD-WFP-5040	Portrait Mount	Portrait display format. Wall offset 27mm (1.06"). VESA to 400x600. Black.



Sophisticated & Unique

Need something more unique than a single display wall mount? Atdec can help you.



Atdec Uncover™ is where our infinite mounting possibilities become your specific mounting solutions.

Call us to discuss your next project

ATDEC Infinite Mounting Possibilities

Australia
+61 2 8729 5000
support@atdec.com
www.atdec.com.au

North America
888 303 4252
usasales@atdec.com
www.atdec.com

Europe
+44 3330 117725
sales@atdec.co.uk
www.atdec.co.uk

New Zealand
0800 887 298
nz@atdec.com
www.atdec.co.nz