

# Modular display mounts for office and hybrid workspaces





## MODULAR

Display mounting solutions that adapt to your business needs.

Designed to accommodate single or multiple displays, modular mounts are the smartest approach for agile environments, activity-based workplaces, and multi-user workstations. The modular nature of these systems allows for infinite combinations and configurations of parts to support various screen sizes, attachment surfaces, and technologies.

## UPGRADEABLE

Future-proof your investment

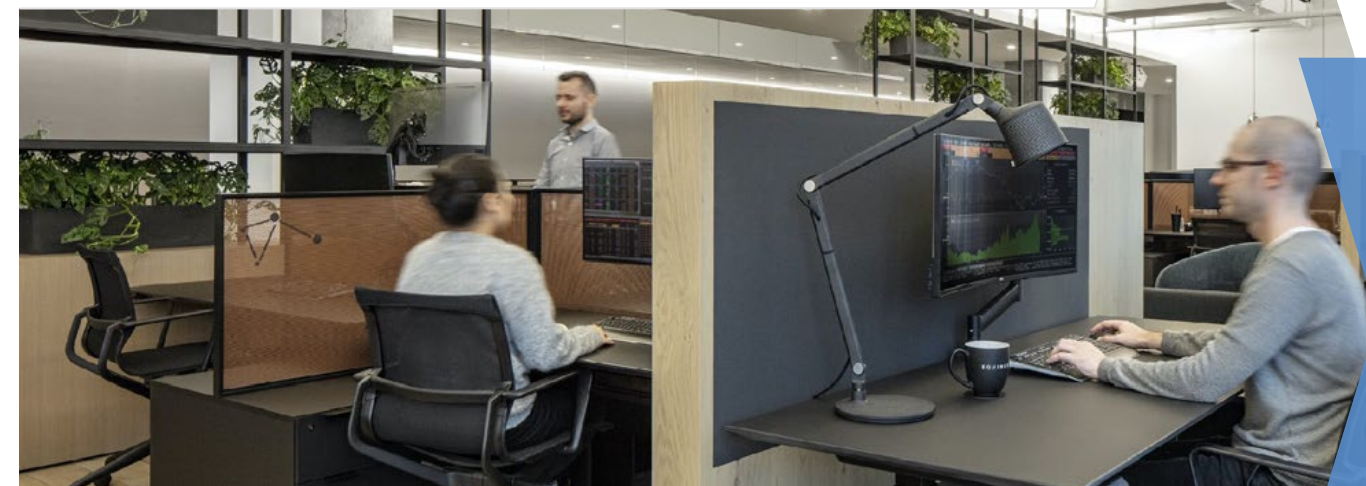


### Multiple desk attachment options



Create › Adapt › Upgrade

*Equinox, USA*



## VERSATILE

Flexibility of movement, display orientation and choice of devices

Modular, configurable technology mounting hardware makes it easy to cater for user technology preferences. Most companies allow employees to bring their own devices to work. This means there may be no “standard” solution for technology mounting, making flexibility key. Modular hardware ensures that screens and other components can always be set to the most comfortable position for viewing and interaction.



Display VESA head can be easily swapped with the laptop holder accessory



Create › Adapt › Upgrade

*Volvo SMT, United Kingdom*





## CHANGING TECHNOLOGY NEEDS

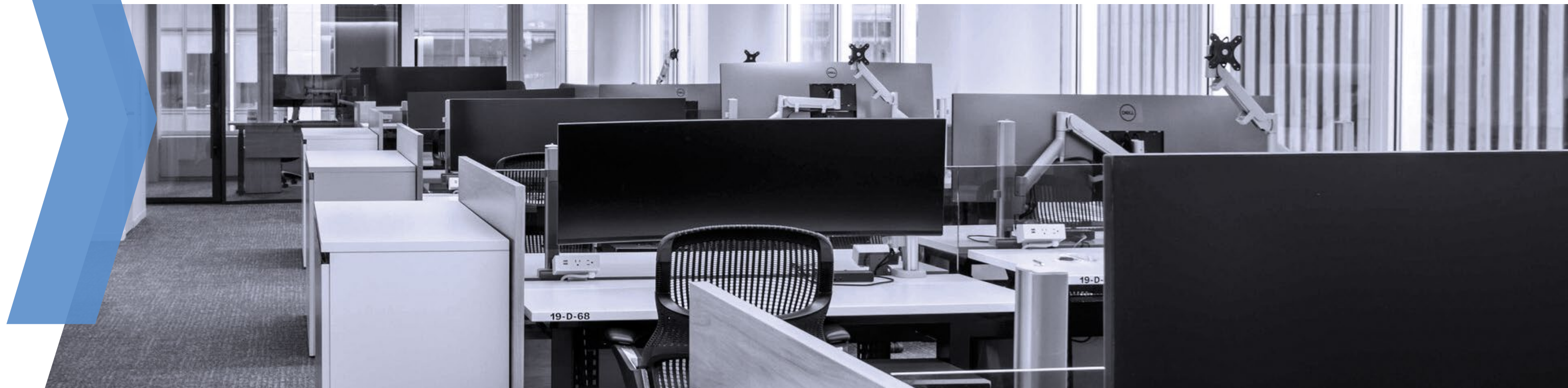
Different projects call for different monitor applications. Our modular mounts keep pace with fast-changing technology and can be tailored to any workspace environment. If you have specific workstation requirements, such as unusual desk configurations or large/heavy monitors, we will create a unique solution for your project.



### Important to know

Curved displays, deep devices (such as all-in-one PCs) and offset VESA locations exert additional leverage on the mount. Atdec modular mounts offer a range of options to accommodate evolving technology and support complex configurations.

*Mazar, USA*



## MONITOR ARMS FOR SIT-TO-STAND DESKS

There's a common misconception that sit-to-stand desks provide the necessary height adjustment for monitors above the desk. While height adjustable desks are doing a lot of the "heavy-lifting" the position of the display always requires additional adjustment for user comfort. It is particularly important in shared multi-user workstations where various user heights and focal distance requirements must be taken into consideration. That's why dynamic arms are an important addition to an ergonomic sit-to-stand workstation.

Create › Adapt › Upgrade





# SET & FORGET OPTIONS



Create › Adapt › Upgrade

*Design world partnership, Australia*



If the height adjustability is not the primary requirement, simple and elegant Set & Forget monitor arms are ideal for fixed height displays and single user

# SET & FORGET OPTIONS

Freestanding mounts are perfect for work-from-home and other applications where displays are not permanently fixed to the desk.



Create › Adapt › Upgrade



# We specialize in **modular mounts**

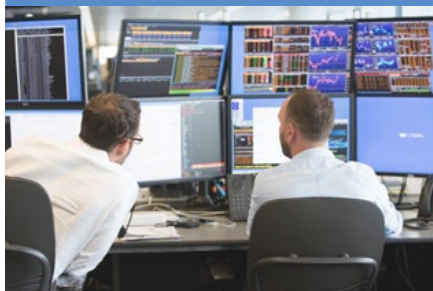
## **Contact** us today

If you have specific requirements or need expert advice, we'd love to help. Our team of engineers will work with you to create the optimal solution for your project.

### **Explore**

Mounting solutions for Video Walls and Video Conferencing equipment

### Mounts for **Trading Desks**



### Mounts for **Video Conferencing**



Our complimentary  
diagnostic service



Training & assisting  
professional installers



Work with our engineers to  
create your bespoke solution

## **Atdec North America**

20427 - 87th Ave  
South Kent WA 98031

Phone: 888 303 4252  
Email: [ateam@atdec.com](mailto:ateam@atdec.com)

**atdec.com**